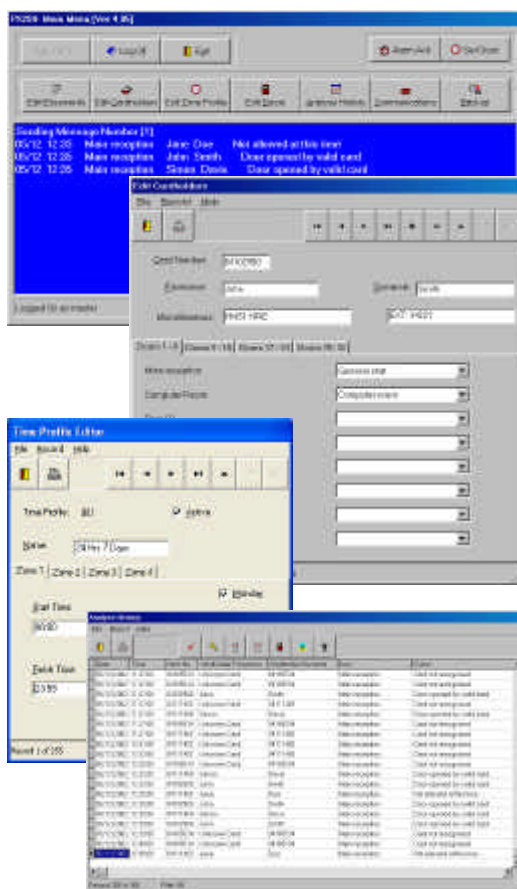




# Access Control System

## Px200

## 32-Door Access Control Admin. Software



- Windows' 9X/NT4.0/2000/XP :
- Simple to Operate:
- Event History analysis:
- Password protected editing:
- Multiple access level feature:
- 128 time profiles:
- Listings to printer:
- Anti passback:
- Door open/forced monitoring:
- Multiple reader technologies:

number information, and then including appropriate Time Profiles for the allowable doors for each cardholder in the database.

The software is designed for ad-hoc usage and, as such, does not require a dedicated P.C. Events retrieved from the buffer memory in the PLAN200 local control units can be analysed and reports printed. The software provides a suite of editors which reflect the stand-alone functionality of the PLAN200 control panel, with the added flexibility that up to 16 panels (32 doors) can be edited at one time, from a single location.

For larger systems, we recommend the use of the WinPLAN640 software package which (combined with PLAN400 local control units) offers virtually unlimited expansion.

The Px200 software application is a 32bit Windows application that allows users with up to 32 readers (controlled by a maximum of 16 PLAN200's) to remotely administer their systems. The software features are password controlled to restrict unauthorised operation. Cardholders are added onto the system by simply entering Name and Card